

Vacuum regulators with pneumatic adjustment differ from the previous ones for the way they adjust the level of vacuum; in fact, instead of acting manually on the adjustment screw, it is necessary to act on the pneumatic cylinder compressed air supply: the higher the pressure, and the higher the level of vacuum and vice-versa.

Vacuum regulators are used to adjust the pre-set level of vacuum and keep it constant (secondary vacuum), regardless of the pump vacuum level or the vacuum level (primary vacuum).

Unlike the vacuum adjusting valves, regulators do not introduce atmospheric air into the circuit, thus producing more gripping points with different vacuum values, from only one vacuum source.

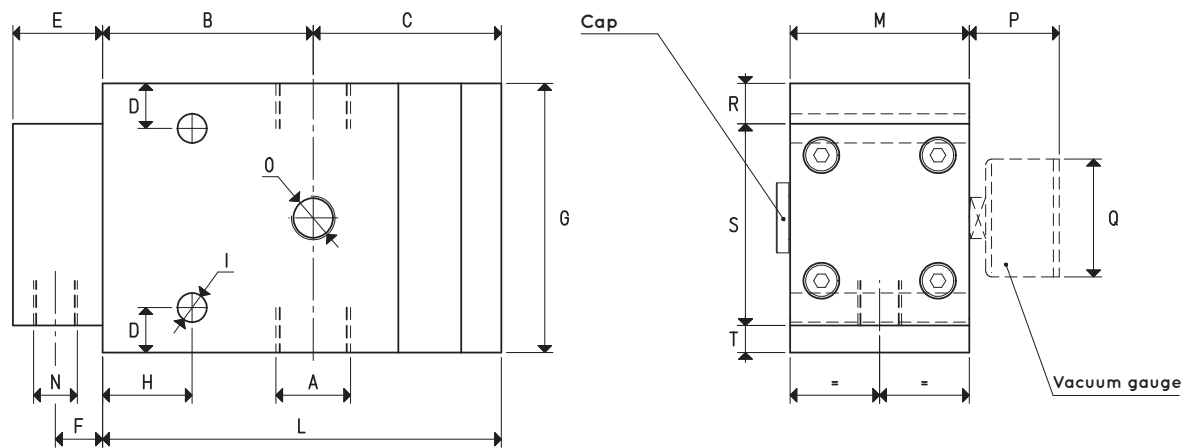
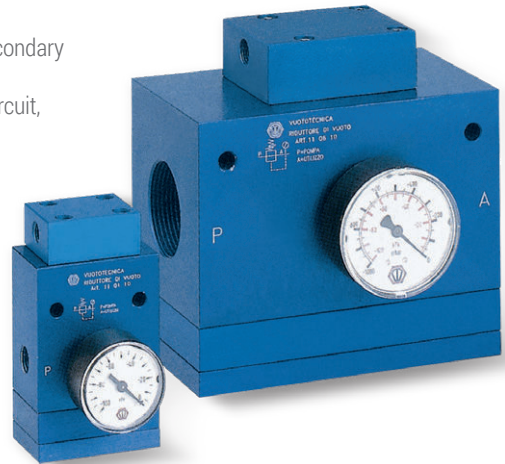
Their operating principle is based on the contrasting action between a pneumatic cylinder with short stroke and a fluctuating piston driven by the pressure differential existing between the secondary vacuum and the atmospheric pressure.

**Technical features**

- Operation: membrane-piston regulator
- Supply pressure: from 0 to 3 bar for regulators item 11 .. 30;  
from 0 to 5 bar for regulators item 11 .. 80.
- Adjustable working pressure: from 800 to 1 mbar abs. for regulators item 11 .. 30;  
from 980 to 1 mbar abs. for regulators item 11 .. 80:
- Flow rate: from 2 to 160 m<sup>3</sup>/h.
- Room temperature: from -10 to +80 °C
- Installation position: any

**Usage**

Vacuum regulators are mainly used on centralised plants where, regardless of the plant level of vacuum, each grip can be adjusted within that value. Moreover, they are necessary whenever the working vacuum must be lower than the primary vacuum and kept constant. Vacuum regulators with pneumatic adjustment can be installed away from the control point, since it is sufficient to have a pressure regulator on the control panel to act on them.



Item	A Ø	Max capac. m <sup>3</sup> /h	B	C	D	E	F	G	H	I Ø	L	M	N Ø	O Ø	P	Q Ø	R	S	T	Vacuum gauge item	Weight Kg
<b>11 01 30</b>	G1/4"	6	47	42.0	10	20	10.5	60	20	6.5	89.0	40	G1/8"	G1/8"	30	40	9.0	45	6.0	09 03 15	0.71
<b>11 02 30</b>	G3/8"	10	47	42.0	10	20	10.5	60	20	6.5	89.0	40	G1/8"	G1/8"	30	40	9.0	45	6.0	09 03 15	0.69
<b>11 03 30</b>	G1/2"	20	53	52.0	15	26	16.5	85	25	8.5	105.0	50	G1/8"	G1/4"	36	63	16.5	58	10.5	09 03 10	1.32
<b>11 04 30</b>	G3/4"	40	55	55.5	15	26	16.5	100	30	8.5	110.5	50	G1/8"	G1/4"	36	63	24.0	58	18.0	09 03 10	1.94
<b>11 05 30</b>	G1"	80	60	58.0	15	26	16.5	120	30	8.5	118.0	60	G1/8"	G1/4"	36	63	34.0	58	28.0	09 03 10	2.35
<b>11 06 30</b>	G1" 1/2	160	54	77.5	15	30	19.5	160	20	8.5	131.5	99	G1/4"	G1/4"	36	63	37.5	80	42.5	09 03 10	5.56
<b>11 03 80</b>	G1/2"	20	53	52.0	15	26	16.5	120	25	8.5	105.0	60	G1/8"	G1/4"	36	63	34.0	58	28.0	09 03 10	2.28
<b>11 05 80</b>	G1"	80	60	58.0	15	26	16.5	120	30	8.5	118.0	100	G1/8"	G1/4"	36	63	34.0	58	28.0	09 03 10	3.96
<b>11 06 80</b>	G1" 1/2	160	54	77.5	15	30	19.5	160	20	8.5	131.5	99	G1/4"	G1/4"	36	63	37.5	80	42.5	09 03 10	5.60

Note: The vacuum gauges are not integral parts of the regulators and, therefore, must be ordered separately.