

COMPACT, RAPID TRANSFER WEDGE ELEVATORS FOR MOVING PRODUCTS THROUGH ELEVATIONS!



- For efficient elevating and/or lowering of packaged product from production levels to overhead run for effective use of floor space or ease of operator access
- Highly flexible design may be configured to the layout requirements
- Ideal for environments requiring small footprints, transition between levels, changing orientations, de-pucking operations and creating passageways on the production floor
- Rapid transfer rates make wedge elevators ideal for continuous high capacity operations such as packaging lines
- Small footprint maximizes floor space
- Uses side pressure and durable urethane grippers to firmly hold products during transport
- Compatible with cardboard boxes, metal cans, plastic containers, etc. Product must be able to withstand some side pressure
- Can be configured with manual adjustable conveyor positioner for quick product size changeover
- Various configurations can change product orientation

Features & Specifications

- Widths: 65 and 85 mm (2.5 and 3 in)
- Minimum lower height: 457 mm (18 in))
- Maximum upper height: 6096 mm (240 in)
- Loads:
 - Maximum individual product weight: 2.3 kg (5 lbs)
 - Maximum total weight: 45.4 kg (100 lbs)
- Speeds: Up to 52.2 mpm (171 fpm)
- Slight variation in product size is compensated for by the flexible wedge fingers without having to adjust the conveyor



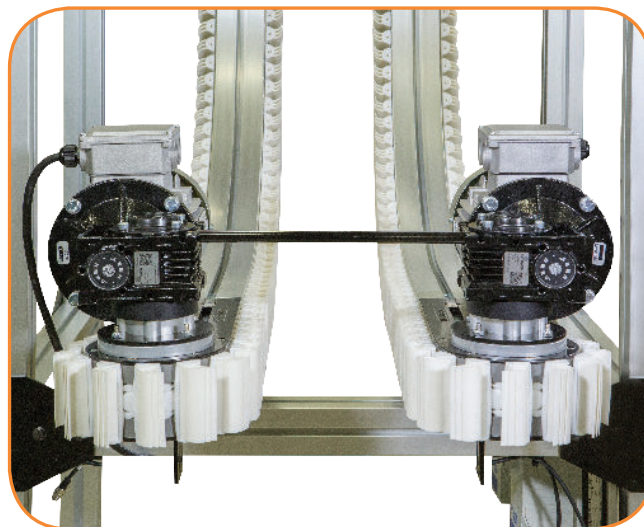
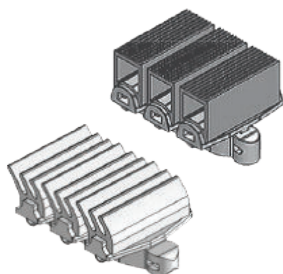
Products are wedged between opposing conveyors

Motors & Controllers

- Consists of (2) independent conveyors
- Each conveyor with variable speed VFD rated gearmotor

Chain Specifications

- Material base chain: Acetal
- Insert: Urethane
- Multiple wedge options available



Typical Layouts

