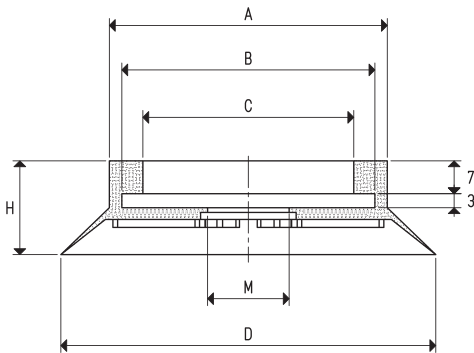


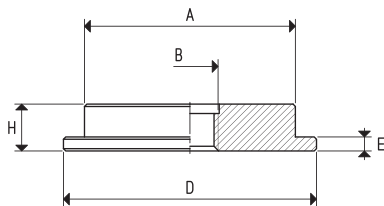
These cups feature a particularly thin and soft lip, which allows it to grip very rough surfaces. Its supporting surface with cleats guarantees a firm grip on the load to be handled. These cups have been specially designed for gripping ceramic tiles with smooth, rough and non-slip surfaces, although, due to their features, they can also be used for handling glass, marble and cement manufactures. These cups can be cold-assembled, with no adhesives, onto their anodised aluminium support equipped with a threaded hole in the centre to allow their fastening to the machine. These cups are extremely easy to replace; for the spare part, in fact, all you have to do is request the cup indicated in the table in the desired compound



CUPS

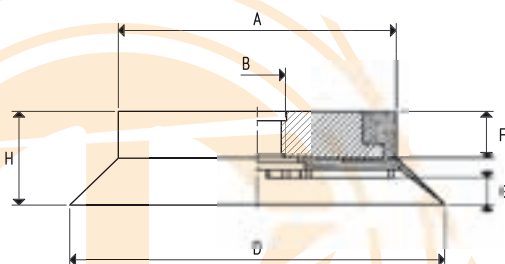
Art.	Force Kg	A Ø	B Ø	C Ø	D Ø	H	M Ø
01 80 20 *	12.56	58	54	45	80	20	17

\* Complete the code indicating the compound: A= oil-resistant rubber; N= natural para rubber; S= silicon



SUPPORTS

Art.	A Ø	B Ø	D Ø	E	H	Support material	Cup art.	Weight g
00 08 126	45	M12	54	3	10	aluminium	01 80 20	45.5
00 08 143	45	G1/2"	54	3	10	aluminium	01 80 20	41.5



CUPS WITH SUPPORTS

Art.	Force Kg	A Ø	B Ø	D Ø	F	G	H	Cup Art.	Support Art.	Weight g
00 80 20 *	12.56	58	M12	80	10	6	20	01 80 20	00 08 126	70.7
00 80 20 1/2" *	12.56	58	G1/2"	80	10	6	20	01 80 20	00 08 143	66.7

\* Complete the code indicating the compound: A= oil-resistant rubber; N= natural para rubber; S= silicon

Conversion ratio: inch =  $\frac{\text{mm}}{25.4}$ ; pounds =  $\frac{\text{g}}{453.6} = \frac{\text{Kg}}{0.4536}$

GAS - NPT thread adapters available at page 1.117