

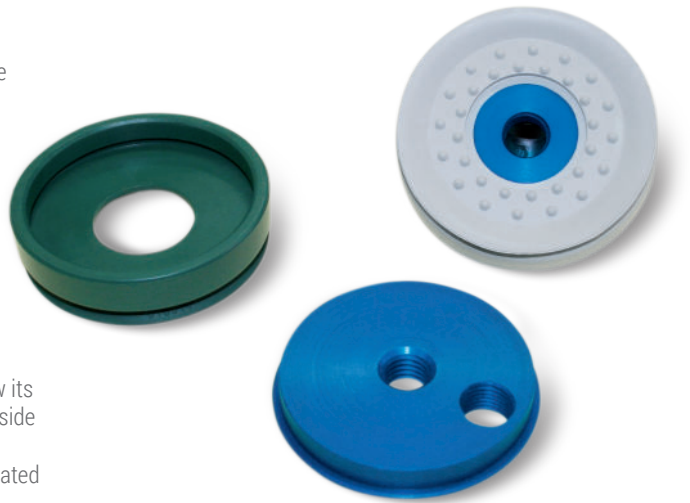
ROUND FLAT VACUUM CUPS WITH SUPPORTS

These cups have been designed in particular for handling metal sheets, glass, wooden panels, machined marble and granite and other similar materials.

The shape of their lips allows a firm grip of the surface of the load to be handled, eliminating any oscillation and significantly reducing the air volume contained within, thus allowing quicker grip and release. These cups are provided with cleats which, besides avoiding the load to bend in correspondence of the gripping point, also have the purpose of increasing the friction surface with the vertically lifted load, preventing it from slipping. They are normally available in the three standard compounds but can be supplied in special compounds listed on pg. 31 and in a minimum amount to be defined in the order, upon request.

These cups can be cold fitted with no adhesives onto their anodised aluminium support equipped with a threaded hole in the centre to allow its fastening to the automation and, upon request, can be supplied with a side hole with gas threading for the suction fitting.

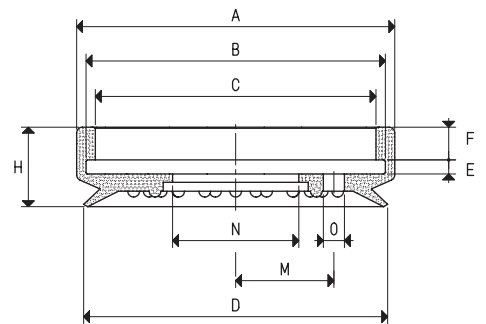
These cups are extremely easy to replace; simply request the cup indicated in the table in the desired compound when requesting the spare part.



VACUUM CUPS

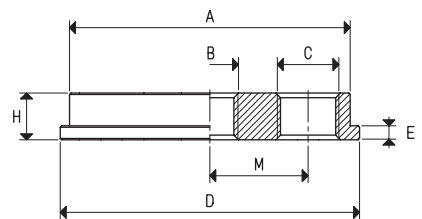
| Item | Force Kg | Volume cm ³ | A Ø | B Ø | C Ø | D Ø | E | F | H | M | N Ø | O Ø |
|-------------------|----------|------------------------|-----|-----|-----|-----|---|---|----|----|-----|-----|
| 01 65 15 * | 8.29 | 9.1 | 68 | 63 | 59 | 65 | 3 | 7 | 17 | -- | 27 | -- |
| 01 65 16 * | 8.29 | 9.1 | 68 | 63 | 59 | 65 | 3 | 7 | 17 | 21 | 27 | 4.5 |

* Complete the code indicating the compound: A= oil-resistant rubber; N= natural para rubber; S= silicone



SUPPORTS

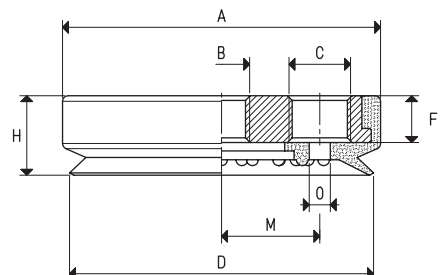
| Item | A Ø | B Ø | C Ø | D Ø | E | H | M | For vacuum cup item | Support material | Weight g |
|------------------|-----|-------|-------|-----|---|----|----|---------------------|------------------|----------|
| 00 08 32 | 60 | M12 | -- | 64 | 3 | 10 | -- | 01 65 15 | aluminium | 80.6 |
| 00 08 424 | 60 | G1/4" | -- | 64 | 3 | 10 | -- | 01 65 15 | aluminium | 80.6 |
| 00 02 36 | 60 | M8 | G1/4" | 64 | 3 | 10 | 21 | 01 65 16 | aluminium | 78.1 |
| 00 06 13 | 60 | M12 | G1/4" | 64 | 3 | 10 | 21 | 01 65 16 | aluminium | 77.1 |



VACUUM CUPS WITH SUPPORT

| Item | Force Kg | A Ø | B Ø | C Ø | D Ø | F | H | M | O Ø | Vacuum cup item | Support item | Weight g |
|------------------------|----------|-----|-------|-------|-----|----|----|----|-----|-----------------|--------------|----------|
| 08 65 15 * | 8.29 | 69 | M12 | -- | 65 | 10 | 17 | -- | -- | 01 65 15 | 00 08 32 | 102.0 |
| 08 65 15 1/4" * | 8.29 | 69 | G1/4" | -- | 65 | 10 | 17 | -- | -- | 01 65 15 | 00 08 424 | 102.0 |
| 08 65 16 * | 8.29 | 69 | M8 | G1/4" | 65 | 10 | 17 | 21 | 4.5 | 01 65 16 | 00 02 36 | 100.0 |
| 08 65 17 * | 8.29 | 69 | M12 | G1/4" | 65 | 10 | 17 | 21 | 4.5 | 01 65 16 | 00 06 13 | 98.5 |

* Complete the code indicating the compound: A= oil-resistant rubber; N= natural para rubber; S= silicone

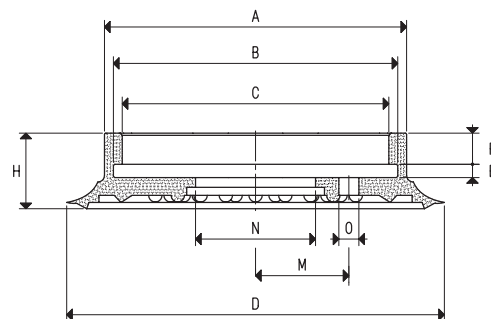




VACUUM CUPS

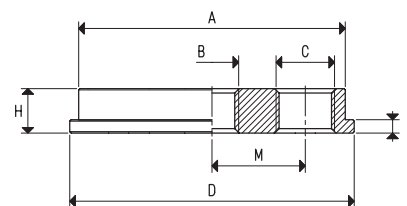
| Item | Force Kg | Volume cm ³ | A Ø | B Ø | C Ø | D Ø | E | F | H | M | N Ø | O Ø |
|-------------------|-------------|---------------------------|--------|--------|--------|--------|---|---|----|----|--------|--------|
| 01 85 15 * | 14.18 | 13.0 | 68 | 63 | 59 | 85 | 3 | 7 | 17 | -- | 27 | -- |
| 01 85 16 * | 14.18 | 13.0 | 68 | 63 | 59 | 85 | 3 | 7 | 17 | 21 | 27 | 4.5 |

* Complete the code indicating the compound: A= oil-resistant rubber; N= natural para rubber; S= silicone



SUPPORTS

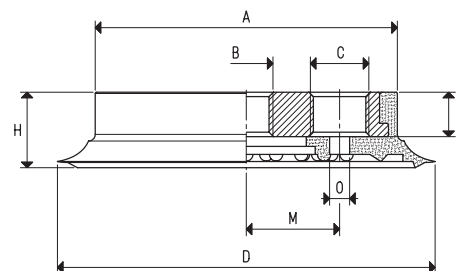
| Item | A Ø | B Ø | C Ø | D Ø | E | H | M | For vacuum cup item | Support material | Weight g |
|------------------|--------|--------|--------|--------|---|----|----|------------------------|---------------------|-------------|
| 00 08 32 | 60 | M12 | -- | 64 | 3 | 10 | -- | 01 85 15 | aluminium | 80.6 |
| 00 08 234 | 60 | G1/2" | -- | 64 | 3 | 10 | -- | 01 85 15 | aluminium | 78.3 |
| 00 08 424 | 60 | G1/4" | -- | 64 | 3 | 10 | -- | 01 85 15 | aluminium | 80.6 |
| 00 08 233 | 60 | G3/4" | -- | 64 | 3 | 10 | -- | 01 85 15 | aluminium | 77.3 |
| 00 02 36 | 60 | M8 | G1/4" | 64 | 3 | 10 | 21 | 01 85 16 | aluminium | 78.1 |
| 00 06 13 | 60 | M12 | G1/4" | 64 | 3 | 10 | 21 | 01 85 16 | aluminium | 77.1 |

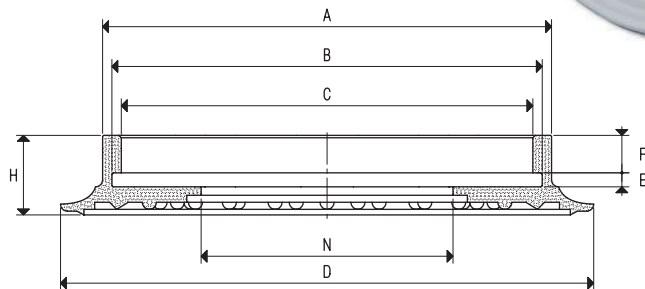
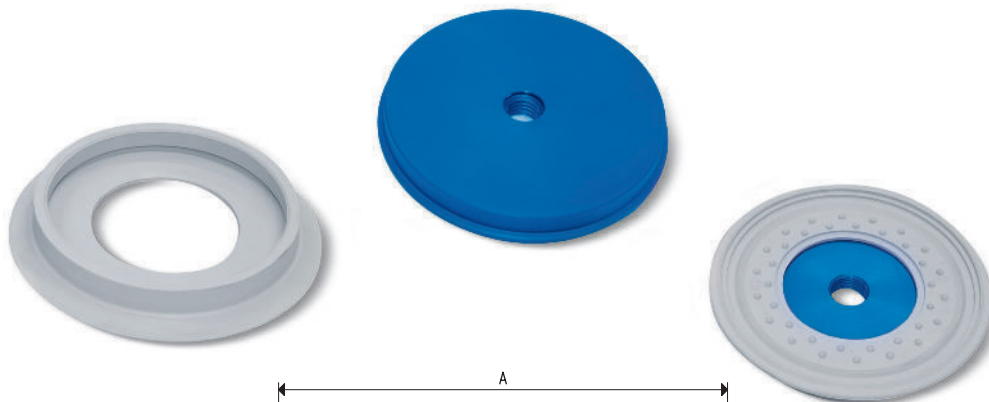


VACUUM CUPS WITH SUPPORT

| Item | Force Kg | A Ø | B Ø | C Ø | D Ø | F | H | M | O Ø | Vacuum cup item | Support item | Weight g |
|------------------------|-------------|--------|--------|--------|--------|----|----|----|--------|--------------------|-----------------|-------------|
| 08 85 15 * | 14.18 | 69 | M12 | -- | 85 | 10 | 17 | -- | -- | 01 85 15 | 00 08 32 | 110.3 |
| 08 85 15 1/2" * | 14.18 | 69 | G1/2" | -- | 85 | 10 | 17 | -- | -- | 01 85 15 | 00 08 234 | 108.0 |
| 08 85 15 1/4" * | 14.18 | 69 | G1/4" | -- | 85 | 10 | 17 | -- | -- | 01 85 15 | 00 08 424 | 107.0 |
| 08 85 15 3/4" * | 14.18 | 69 | G3/4" | -- | 85 | 10 | 17 | -- | -- | 01 85 15 | 00 08 233 | 107.0 |
| 08 85 16 * | 14.18 | 69 | M8 | G1/4" | 85 | 10 | 17 | 21 | 4.5 | 01 85 16 | 00 02 36 | 107.7 |
| 08 85 17 * | 14.18 | 69 | M12 | G1/4" | 85 | 10 | 17 | 21 | 4.5 | 01 85 16 | 00 06 13 | 106.7 |

* Complete the code indicating the compound: A= oil-resistant rubber; N= natural para rubber; S= silicone

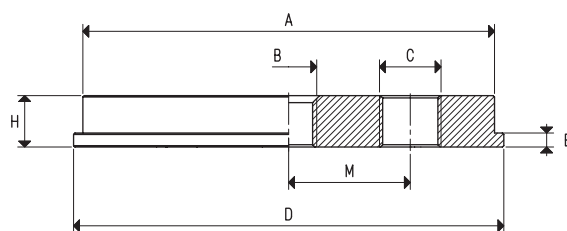




VACUUM CUP

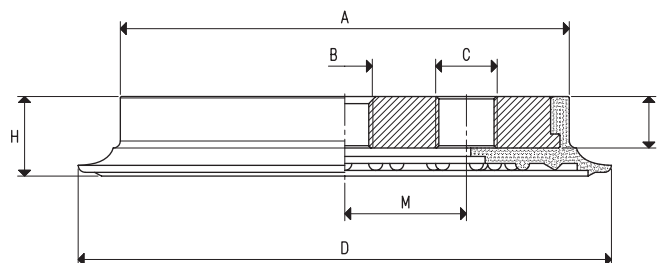
| Item | Force Kg | Volume cm ³ | A Ø | B Ø | C Ø | D Ø | E | F | H | N Ø |
|--------------------|-------------|---------------------------|--------|--------|--------|--------|---|---|----|--------|
| 01 110 10 * | 23.74 | 24.9 | 96 | 91 | 87 | 114 | 3 | 8 | 17 | 54 |

* Complete the code indicating the compound: A= oil-resistant rubber; N= natural para rubber; S= silicone



SUPPORTS

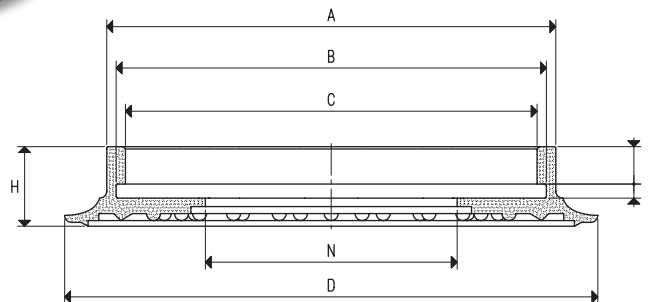
| Item | A Ø | B Ø | C Ø | D Ø | E | H | M | For vacuum cup item | Support material | Weight g |
|------------------|--------|--------|--------|--------|---|----|----|------------------------|---------------------|-------------|
| 00 08 33 | 88 | M12 | -- | 92 | 3 | 11 | -- | 01 110 10 | aluminium | 188.9 |
| 00 02 37 | 88 | M8 | G1/4" | 92 | 3 | 11 | 26 | 01 110 10 | aluminium | 188.8 |
| 00 06 14 | 88 | M12 | G1/4" | 92 | 3 | 11 | 26 | 01 110 10 | aluminium | 185.8 |
| 00 08 123 | 88 | G3/8" | -- | 92 | 3 | 11 | -- | 01 110 10 | aluminium | 186.1 |



VACUUM CUPS WITH SUPPORT

| Item | Force Kg | A Ø | B Ø | C Ø | D Ø | F | H | M | Vacuum cup item | Support item | Weight g |
|--------------------|-------------|--------|--------|--------|--------|----|----|----|--------------------|-----------------|-------------|
| 08 110 10 * | 23.74 | 97 | M12 | -- | 114 | 11 | 17 | -- | 01 110 10 | 00 08 33 | 233.2 |
| 08 110 11 * | 23.74 | 97 | M8 | G1/4" | 114 | 11 | 17 | 26 | 01 110 10 | 00 02 37 | 233.1 |
| 08 110 12 * | 23.74 | 97 | M12 | G1/4" | 114 | 11 | 17 | 26 | 01 110 10 | 00 06 14 | 230.1 |
| 08 110 13 * | 23.74 | 97 | G3/8" | -- | 114 | 11 | 17 | -- | 01 110 10 | 00 08 123 | 230.4 |

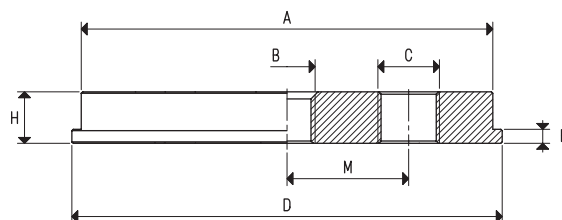
* Complete the code indicating the compound: A= oil-resistant rubber; N= natural para rubber; S= silicone



VACUUM CUP

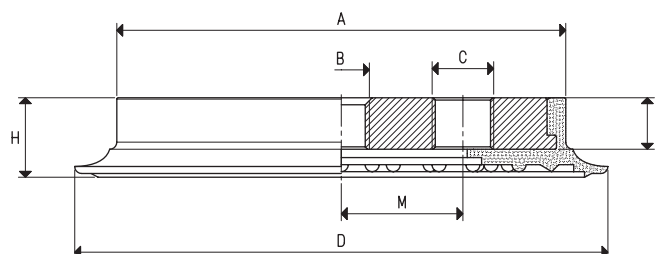
| Item | Force Kg | Volume cm ³ | A Ø | B Ø | C Ø | D Ø | E | F | H | N Ø |
|-------------|----------|------------------------|-----|-----|-----|-----|---|----|----|-----|
| 01 150 10 * | 45.00 | 75.7 | 133 | 125 | 118 | 154 | 4 | 11 | 23 | 64 |

* Complete the code indicating the compound: A= oil-resistant rubber; N= natural para rubber; S= silicone



SUPPORTS

| Item | A Ø | B Ø | C Ø | D Ø | E | H | M | For vacuum cup item | Support material | Weight g |
|-----------|-----|-------|-------|-----|---|----|----|---------------------|------------------|----------|
| 00 08 35 | 120 | M12 | -- | 127 | 4 | 15 | -- | 01 150 10 | aluminium | 471.3 |
| 00 08 107 | 120 | M12 | G3/8" | 127 | 4 | 15 | 30 | 01 150 10 | aluminium | 476.9 |
| 00 08 119 | 120 | G3/8" | -- | 127 | 4 | 15 | -- | 01 150 10 | aluminium | 478.9 |
| 00 08 145 | 120 | G3/8" | G3/8" | 127 | 4 | 15 | 27 | 01 150 10 | aluminium | 471.9 |
| 00 06 15 | 120 | M12 | G1/4" | 127 | 4 | 15 | 30 | 01 150 10 | aluminium | 476.3 |



VACUUM CUPS WITH SUPPORT

| Item | Force Kg | A Ø | B Ø | C Ø | D Ø | F | H | M | Vacuum cup item | Support item | Weight g |
|-------------|----------|-----|-------|-------|-----|----|----|----|-----------------|--------------|----------|
| 08 150 10 * | 45.00 | 135 | M12 | -- | 154 | 15 | 23 | -- | 01 150 10 | 00 08 35 | 583.3 |
| 08 150 12 * | 45.00 | 135 | M12 | G3/8" | 154 | 15 | 23 | 30 | 01 150 10 | 00 08 107 | 588.9 |
| 08 150 13 * | 45.00 | 135 | G3/8" | -- | 154 | 15 | 23 | -- | 01 150 10 | 00 08 119 | 590.9 |
| 08 150 14 * | 45.00 | 135 | G3/8" | G3/8" | 154 | 15 | 23 | 27 | 01 150 10 | 00 08 145 | 583.9 |
| 08 150 16 * | 45.00 | 135 | M12 | G1/4" | 154 | 15 | 23 | 30 | 01 150 10 | 00 06 15 | 588.3 |

* Complete the code indicating the compound: A= oil-resistant rubber; N= natural para rubber; S= silicone